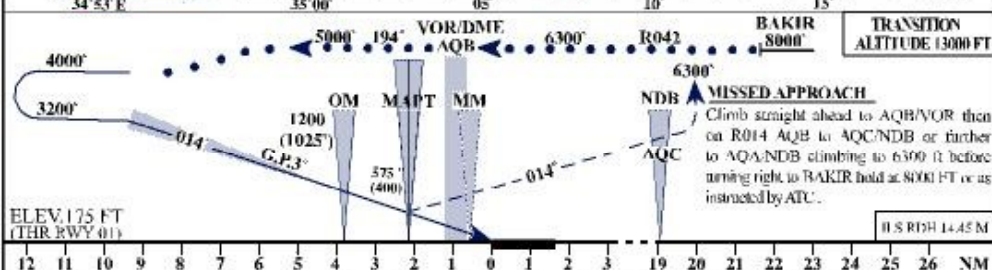


- REMARKS**
1. procedure turn must be contained within 13 DME AQB/VOR
 2. When completing the procedure turn remain East of R 206 AQB/VOR until intercepting the localizer.
 3. Remain within Jordanian airspace.
 4. MAX IAS 180 KTS.



OCA/H		A	B	C	D	VISUAL CIRCLING	
STRAIGHT-IN APPROACH	CAT	ALL CATEGORIES 575 (400)				NOT AVAILABLE	
	GP INOP	675 (500)					